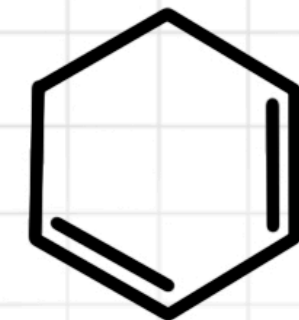
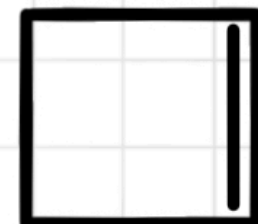
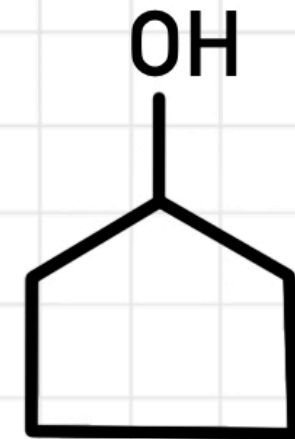
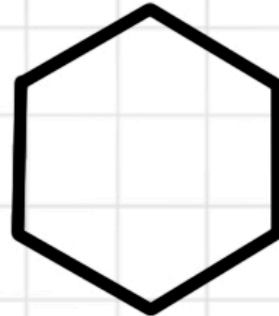
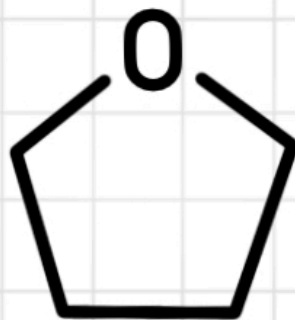


# CLASSIFICAÇÃO DAS Cadeias Carbônicas FECHADAS

**natureza**  
DA CADEIA

HETEROGÊNEA OU HETEROCÍCLICA

apresenta heteroátomo



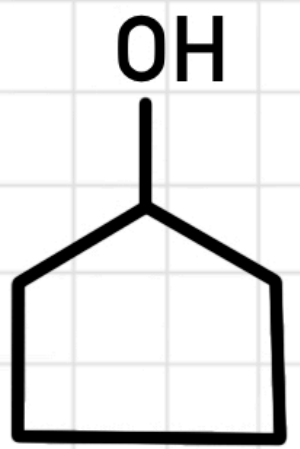
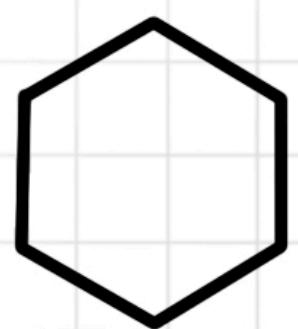
INSATURADA

SATURADA

**ligação**  
ENTRE CARBONOS

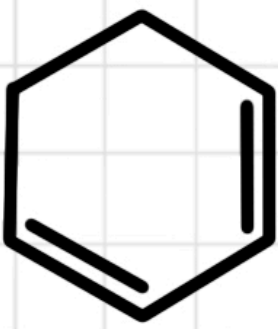
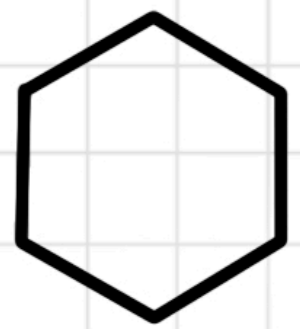
HOMOGÊNEA OU HOMOCÍCLICA

não existe átomo diferente de carbono entre os átomos de carbono



MONOCÍCLICA

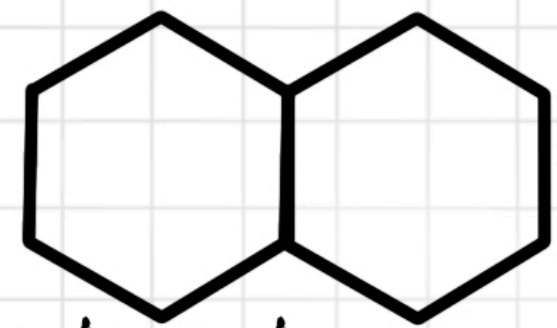
apresenta um único ciclo ou anéis



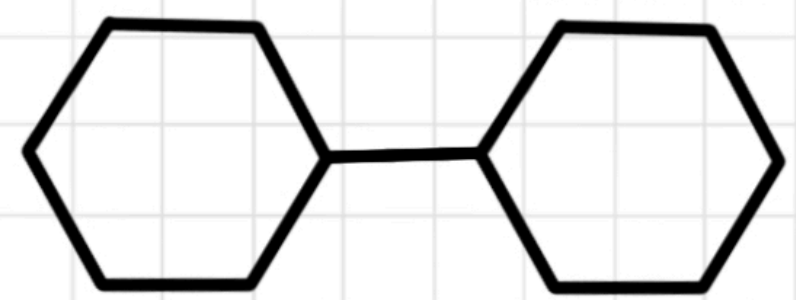
QUANTIDADE DE **ciclos**

POLICÍCLICA

apresenta dois ou mais ciclos ou anéis



condensada



isolada

