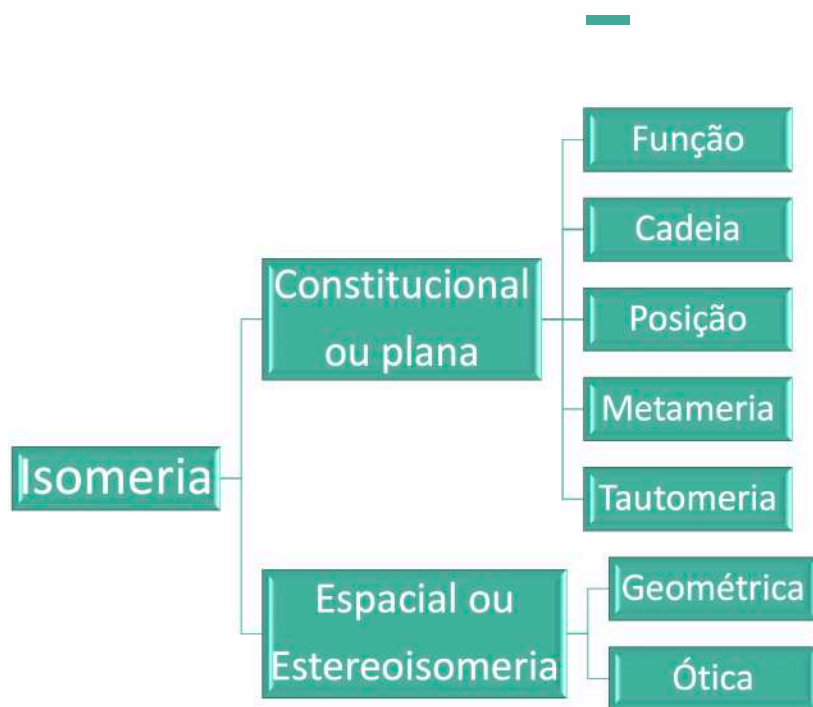
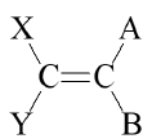


# Isomeria



## Isomeria geométrica

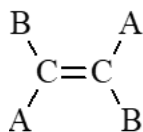
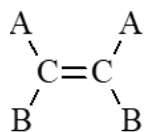


ou

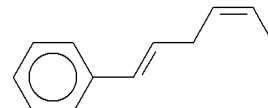
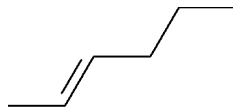
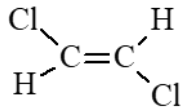
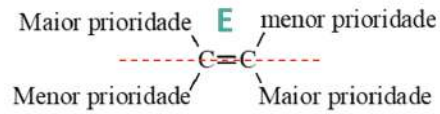
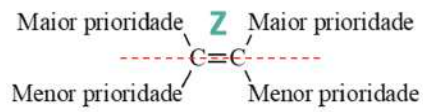


Onde necessariamente  $X \neq Y$  e  $A \neq B$

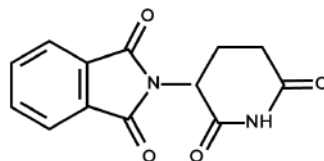
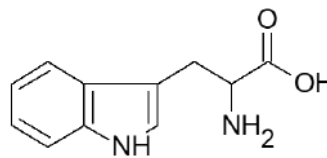
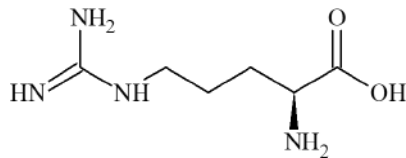
## Nomenclatura CIS – TRANS



## Nomenclatura E – Z



## Isomeira Óptica



Talidomida

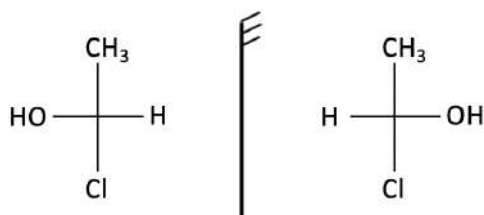
## Fórmula de Van't Hoff

**Estereoisômeros ativos =  $2^n$**

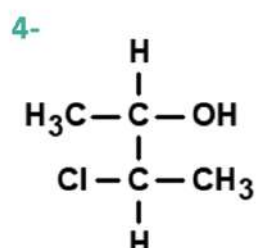
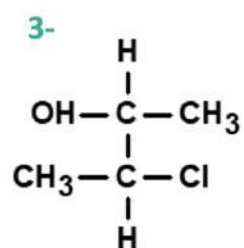
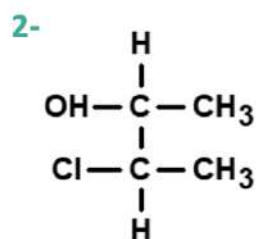
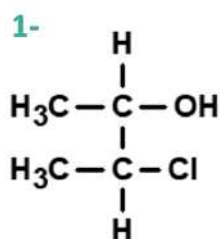
Onde n = número de carbonos quirais diferentes.

**Misturas racêmicas =  $2^n/2$  ou  $2^{n-1}$**

A cada dois enantiômeros → 1 mistura racêmica



Observe:



Fórmula molecular

--

1 e 2	
1 e 3	
1 e 4	
2 e 3	
2 e 4	
3 e 4	

Anotações: