



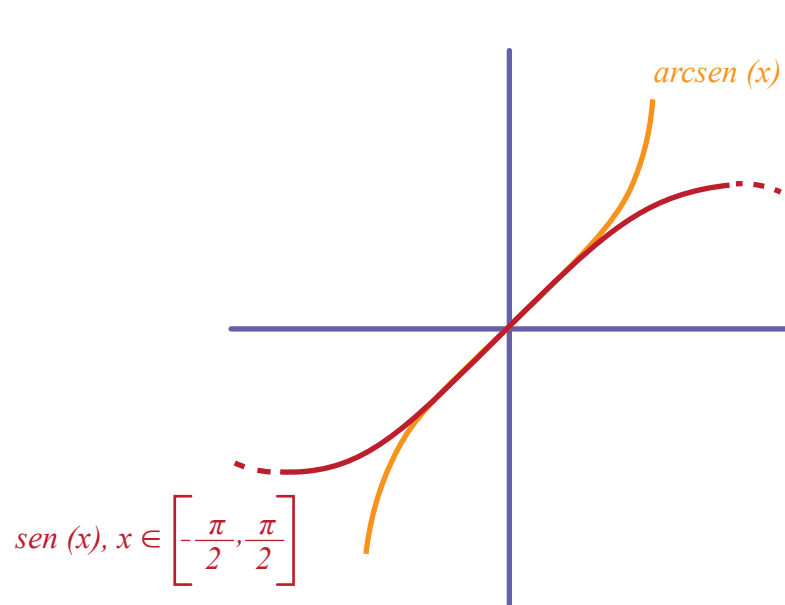
MAPA MENTAL

TRIGONOMETRIA

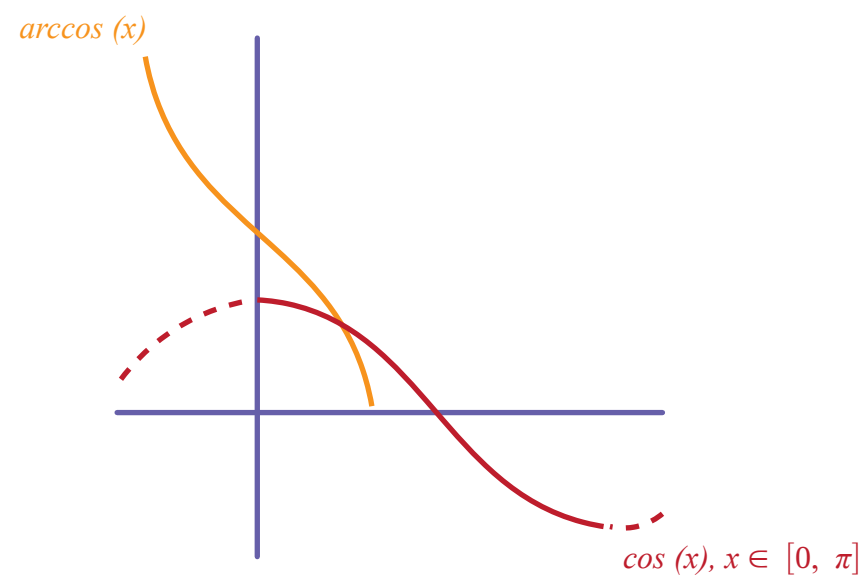
FUNÇÕES TRIGONOMÉTRICAS INVERSAS

CONDIÇÃO DE EXISTÊNCIA

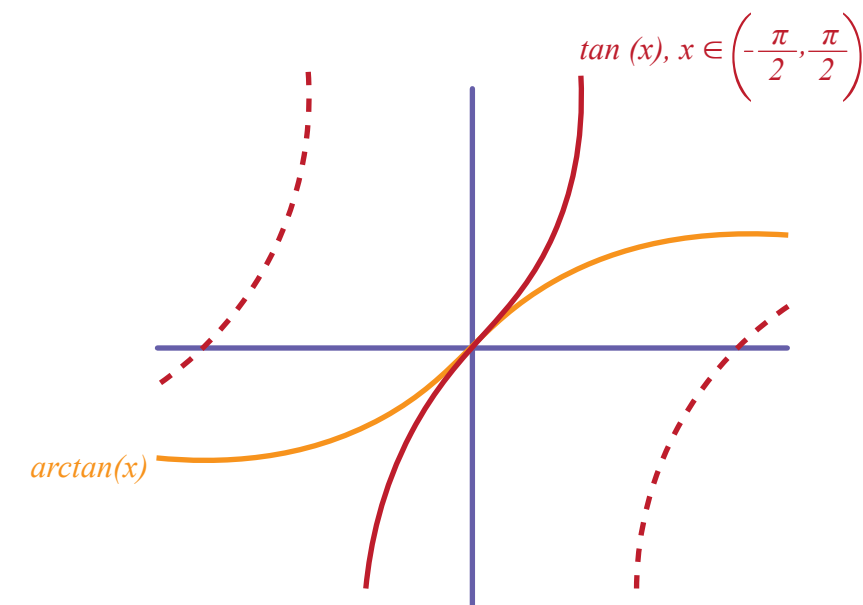
Restringir o domínio ou contradomínio para tornar a função bijetora



$$y = \text{sen } x \therefore \text{arcsen } y = x$$



$$y = \text{cos } x \therefore \text{arccos } y = x$$



$$y = \text{tan } x \therefore \text{arctan } y = x$$