

resolução - nivelando

GRÁFICOS

01. ① $\frac{800}{4} = 200$

② $\frac{1000}{8} = 125$

③ $\frac{1100}{5} = 220$ → maior margem → maior a eficiência

④ $\frac{1800}{9} = 200$

(C)

⑤ $\frac{1400}{10} = 140$

02. $\frac{-0,6 + 0,2 + 0,8 + 0,4 - 0,2 - 0,3 - 0,1 - 0,4 - 0,1 + 0,9 + 1,1 + 2,6}{12} =$

$\frac{4,3}{12} = 0,35$

7 meses

(B)

03. $13,6$ (TRABALHA E ESTUDA) + $45,2$ (SOMENTE TRABALHA) = $58,8$

$58,8\%$ de $363000 = \frac{58,8 \cdot 363000}{100} = 213444$ jovens

(C)

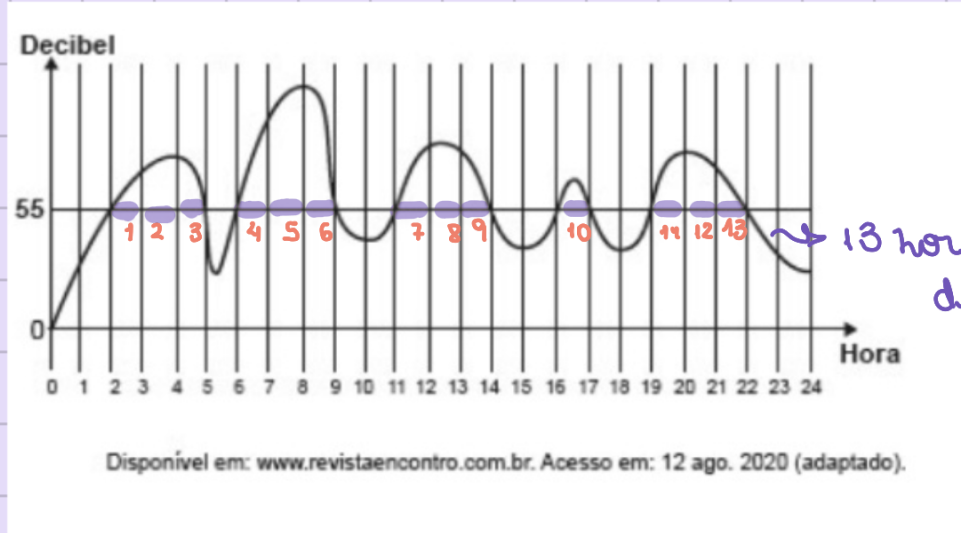
04. ③ $13 \cdot 200 = 2600$

④ $10 \cdot 140 = 1400$

- Ⓐ 10 · 140 = 1400
- Ⓑ 16 · 150 = 2400
- Ⓒ 29 · 100 = 2900 ← maior arrecadação ← maior reposição
- Ⓓ 32 · 80 = 2560

Ⓓ

05.



→ 13 horas acima de 55 dB

E

Disponível em: www.revistaencontro.com.br. Acesso em: 12 ago. 2020 (adaptado).

06.

$$3,9 \cdot x = 4,4$$

$$x = \frac{4,4}{3,9} \approx 1,128$$

↳ aumento de 0,128
 ↳ aumento de 12,8% → aprox. 13%

B

07.

SET OUT

$$1400 \cdot x = 3500$$

$$x = 2,5$$

↓ mesma taxa

NOV DEZ

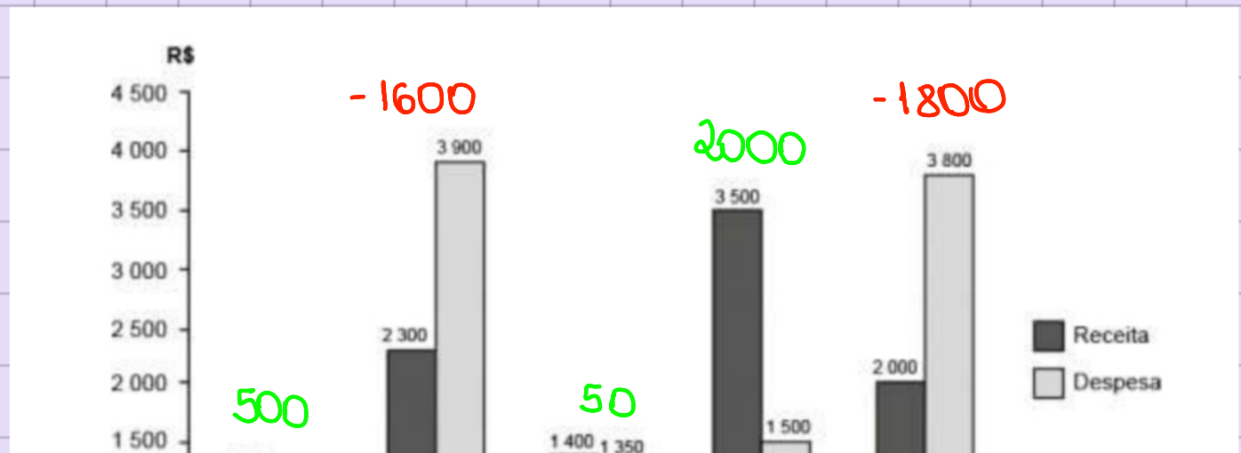
$$2000 \cdot 2,5 = 5000$$

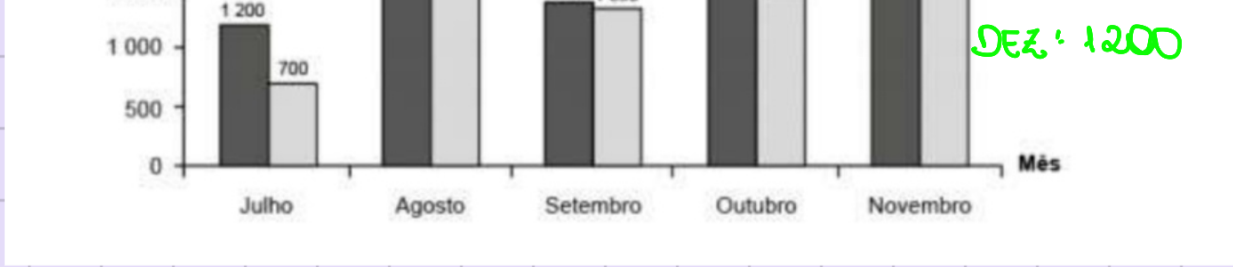
SEZEMBRO

RECEITA : 5000

DESPESA : 3800 (mesma de novembro)

TOTAL : 1200

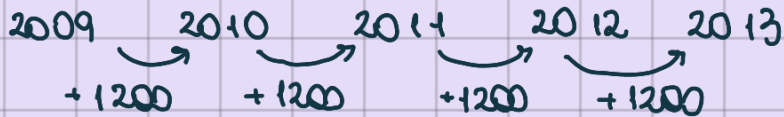




$$500 - 1600 + 50 + 2000 - 1800 + 1200 = +350$$

£

08. $8400 - 7200 = 1200$ de aumento



$8400 + 4800 = 13200$
(de 2013 a 2023)

D

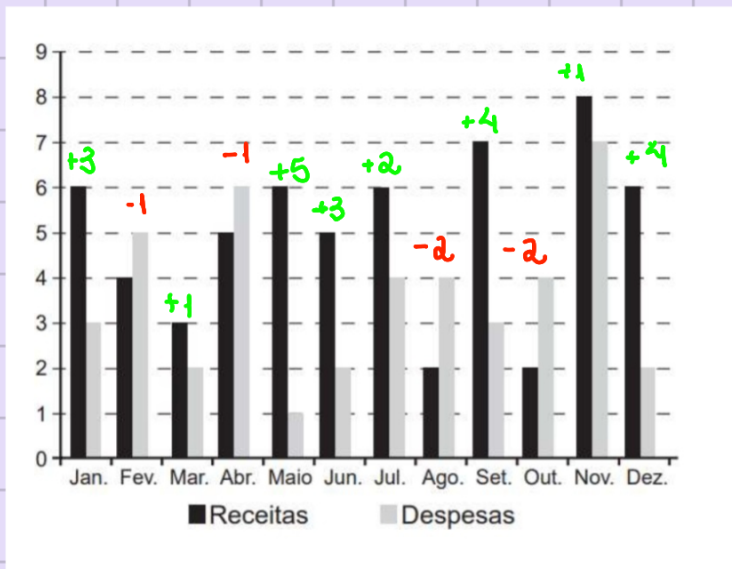
09. MAR → ABRIL (30 → 70) 40 mm de acréscimo

↳ maior acréscimo

$10 \text{ mm} + 40 \text{ mm} = 50 \text{ mm}$

B

10.



- 1 1 2 3 3 4 4 5

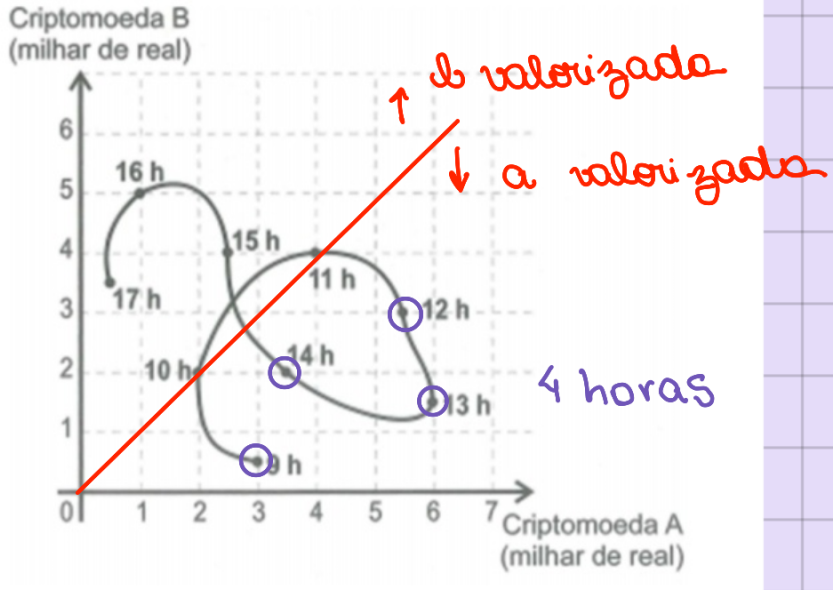
↳ mediana: $\frac{3+3}{2} = 3$

D

11. $3755 - 3691 = 64$ (maior aumento absoluto)

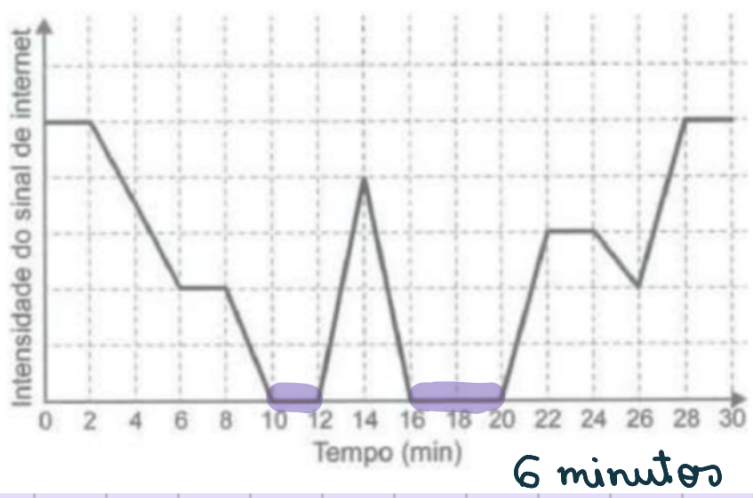
D

12.



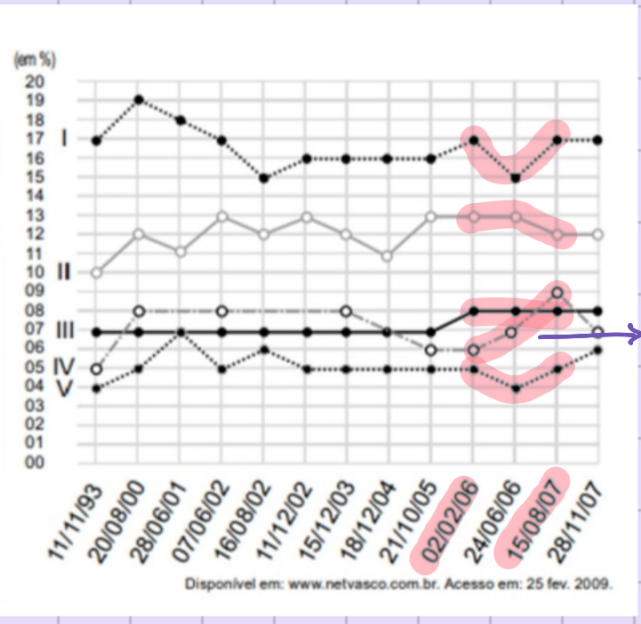
(B)

13.



(A)

14.



único que só crescer II

(D)

15.

18 000 → 15 000 → 12 000 TOTAL: 45 000
 -3000 -3000

8000 → 7000 → 6000 TOTAL: 21 000
 -1000 -1000

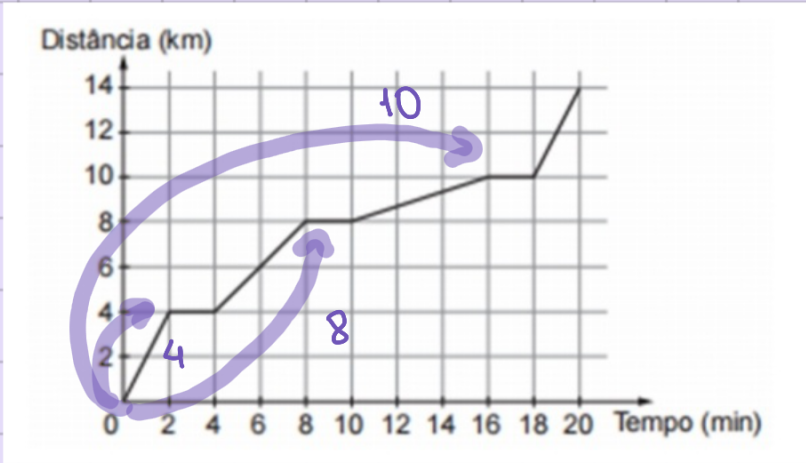
T: 45 000 + 21 000 = 66 000

(C)

meta: 77 000

gelta: 11 000

16.



4,8,10

(D)

17. 3 - 6 → 300

10 - 12 → 200

TOTAL: 500

(B)

18.

A > E > O > S
↓ ↓ ↓ ↓

D H R V → CODIFICADO

(C)

19. $\frac{20}{100} \cdot 105 = 21$

$\frac{30}{100} \cdot 100 = 30$

$\frac{50}{100} \cdot 20 = 10$

$\frac{40}{100} \cdot 80 = 32$

$\frac{60}{100} \cdot 40 = 24$

(D)

IV

20.

$$R_2 = R_1 + C_1$$

$$P_2 = R_2$$

$$C_2 = C_1$$



$$7 + 5 + 7 + 12 + 15 +$$

$$15 + 11 = 72$$

$$P_1 = 2 + 4 + 4 + 7 + 8 + 10 +$$

$$10 = 45$$

$$P_2 - P_1 = 72 - 45 = 27$$

(3)

SEGUNDA

$$R_2 = 4 + 3$$

$$R_2 = 7$$

QUINTA

$$R_2 = 8 + 4$$

$$R_2 = 12$$

DOMINGO

$$R_2 = 7 + 4$$

$$R_2 = 11$$

TERÇA

$$R_2 = 4 + 1$$

$$R_2 = 5$$

SEXTA

$$R_2 = 8 + 7$$

$$R_2 = 15$$

QUARTA

$$R_2 = 5 + 2$$

$$R_2 = 7$$

SÁBADO

$$R_2 = 8 + 7$$

$$R_2 = 15$$