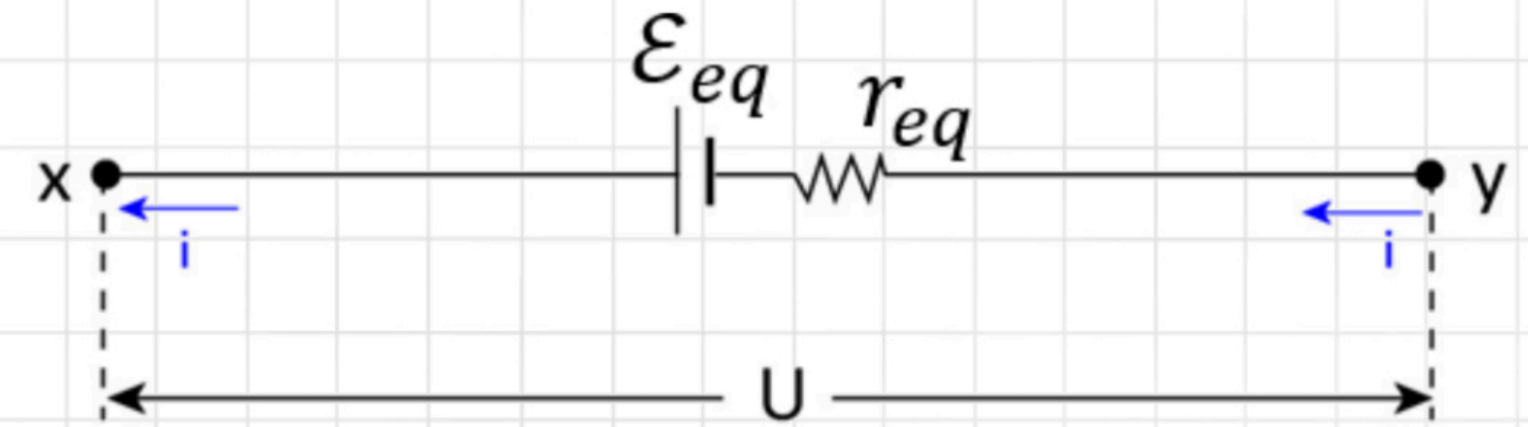


gerador equivalente



em série



$$\epsilon_{eq} = \epsilon_1 + \epsilon_2 + \epsilon_N + \dots$$

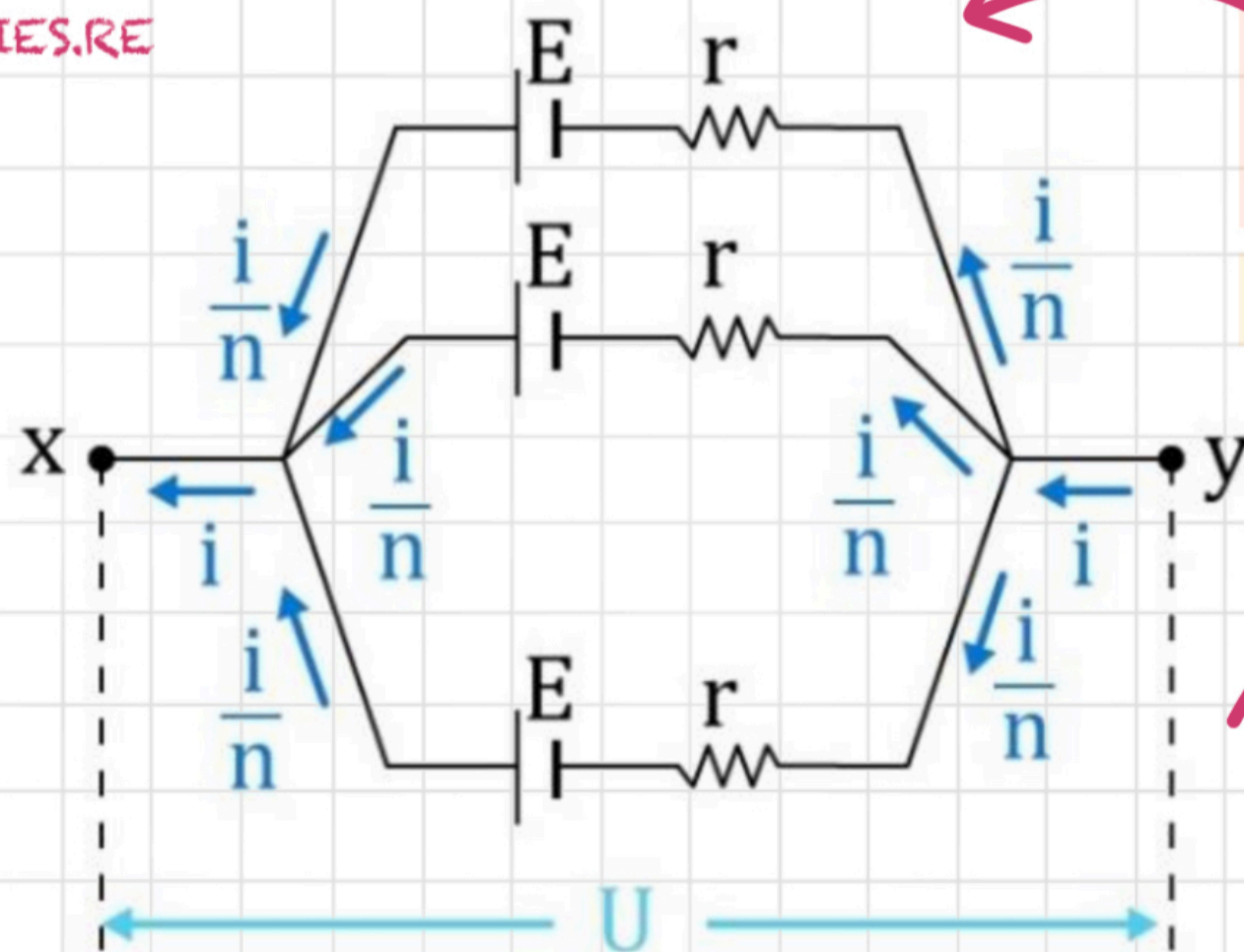
$$r_{eq} = r_1 + r_2 + r_N + \dots$$

ASSOCIAÇÃO DE

geradores

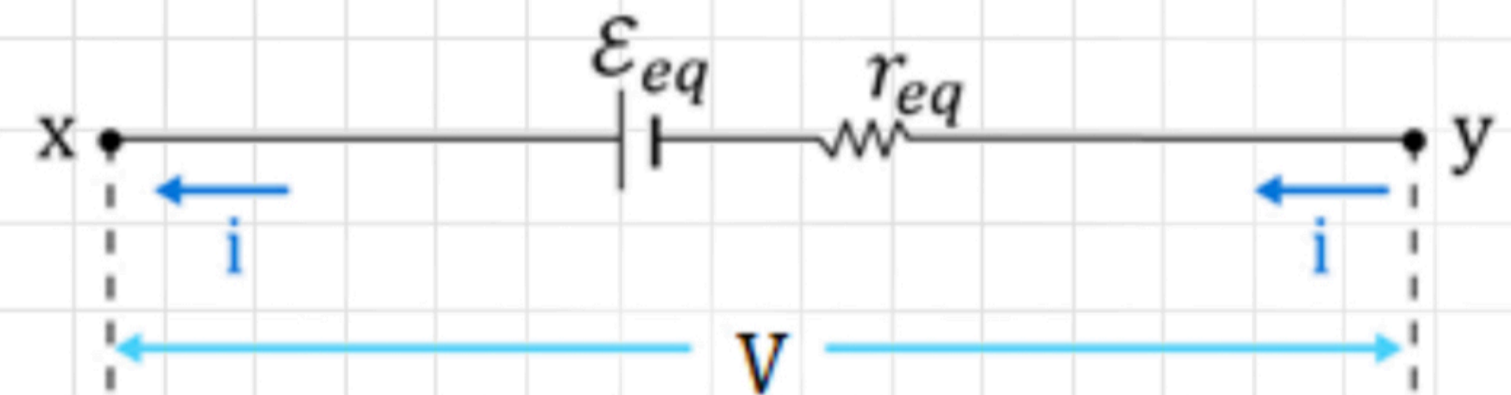
em paralelo

@STUDIES.RE



$$\epsilon_{eq} = \epsilon$$

$$r_{eq} = \frac{r}{n}$$



gerador equivalente