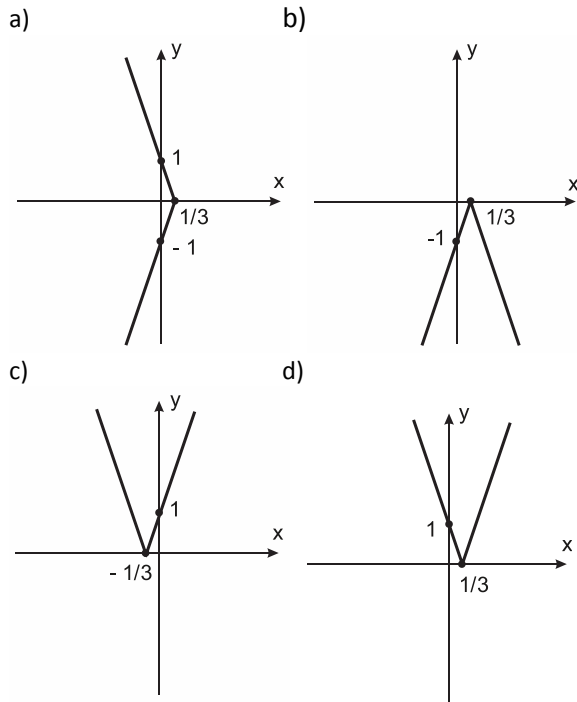
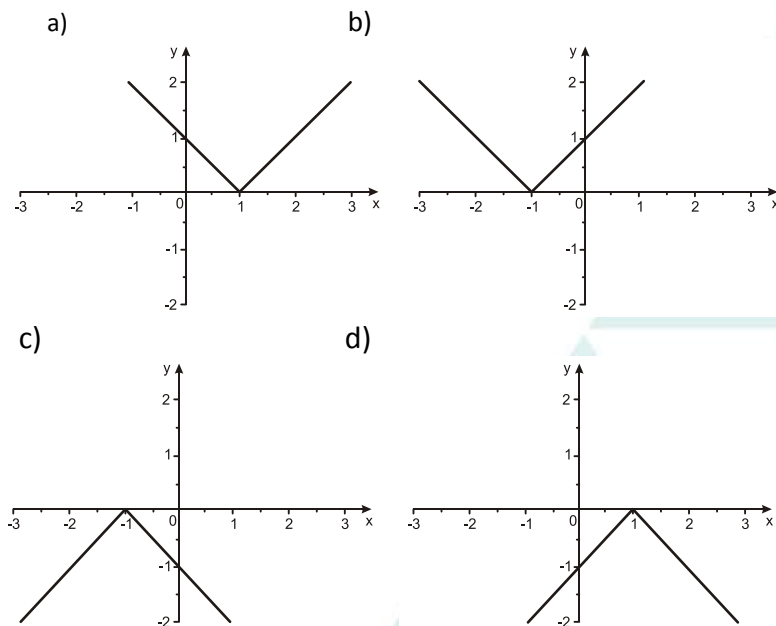


05-FUNÇÃO MODULAR – PARTE 4

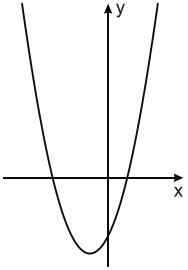
Q1) Q1) Qual dos gráficos abaixo representa a função real $f(x) = |3x - 1|$?



Q2) Considere a função real $f(x) = |-x + 1|$. O gráfico que representa a função é:

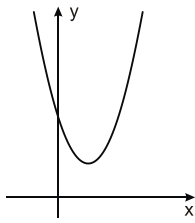
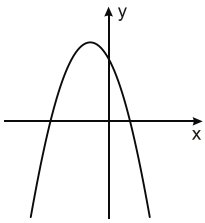


Q3) Observe o gráfico da função f definida por $y = f(x)$,



então, das alternativas abaixo, a que pode representar o gráfico da função z , definida por $z = |f(x)|$, é

a) b)



c) d)

